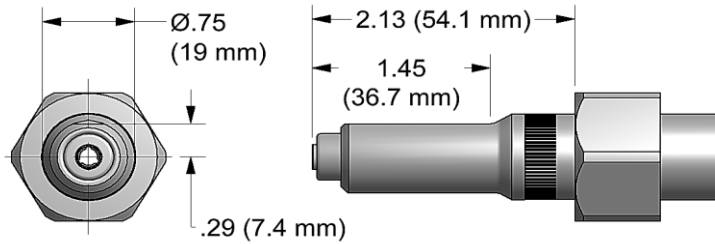
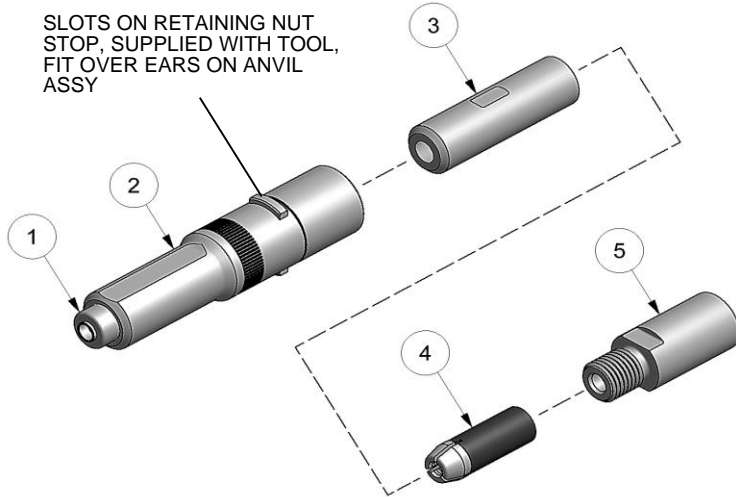


NOSE ASSEMBLY DATA SHEET



SLOTS ON RETAINING NUT STOP, SUPPLIED WITH TOOL, FIT OVER EARS ON ANVIL ASSY



ASSEMBLY:

Note: If nose assy is assembled as it is when purchased new, follow steps 3-5 to attach to tool.

1. Drop super grip jaw assy (4) into collet (3). (Note direction in exploded view).
2. Thread collet (3) to extension-collet (5). Snug tighten assembled parts using 9/16" wrench on collet (3) and on extension - collet (5).
3. Thread assembled collet (3) and extension-collet (5) to piston on tool. Snug tighten assembled parts using 9/16" wrench on extension-collet (5) and hex key in rear of piston on tool.
4. Slide anvil assy (2) over assembled collet (3) and extension-collet (5).
5. Slide Retaining nut and retaining nut stop (see exploded view) on anvil assy (2) and tighten.

DISASSEMBLY:

Reverse assembly instructions.



10/01 REV 7/16

*Anvil & holder assembly includes 35208 retainer

GAGE BILT
MADE in the USA

INNOVATIVE TOOLING
ON THE LEADING EDGE OF AIRCRAFT TOOLING
Est. 1986 | innovativetooling.com | 800-832-7009

Type:		Fastener:	Recommended Tool: GB722
Non Self-Releasing 17/64" Ø		2 ASP®, ASP PF, ASP FF ASP F & ASP LC	Alternate Tools: GB752, GB713 & GB2480(A)
Ref. No.	Qty.	Description	ASP08-752B-20
1	1	Cap assy	10143
2	1	Anvil & Holder Assy (Incl. #1)	17769
3	1	Collet	20717
4	1	Super-Grip Jaw Assy	30864-S2
5	1	Extension-Collet	70550-1