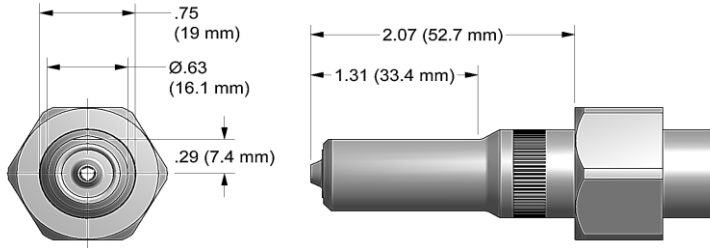
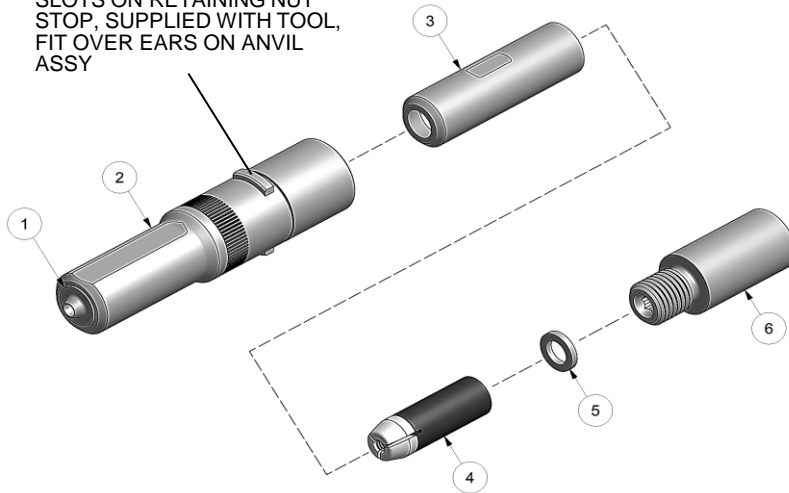


NOSE ASSEMBLY DATA SHEET



SLOTS ON RETAINING NUT STOP, SUPPLIED WITH TOOL, FIT OVER EARS ON ANVIL ASSY



ASSEMBLY:

Note: If nose assy is assembled as it is when purchased new, follow steps 3-5 to attach to tool.

1. Drop super grip jaw assy (4) and spacer (5) into collet (3). (Note direction in exploded view).
2. Thread collet (3) to extension-collet (5). Snug tighten assembled parts using 9/16" wrench on collet (3) and on extension-collet (5).
3. Thread assembled collet (3) and extension-collet (5) to piston on tool. Snug tighten assembled parts using 9/16" wrench on extension-collet (5) and hex key in rear of piston on tool.
4. Slide anvil assy (2) over assembled collet (3) and extension-collet (5).
5. Slide Retaining nut and retaining nut stop (see exploded view) on anvil assy (2) and tighten.

DISASSEMBLY:

[GSA Schedule](#)

NSN: 5130-01-086-9692

Rev. 10/16



*ANVIL ASSEMBLY INCLUDES 35208 RETAINER

GAGE BILT

MADE in USA

INNOVATIVE TOOLING

ON THE LEADING EDGE OF AIRCRAFT TOOLING

Est. 1986 | innovativetooling.com | 800-832-7009

Type:		Fasteners:	Recommended Tool: GB752
Non Self-Releasing 5/32" Ø		BLIND BOLT (SINGLE ACTION) WITH OR W/OUT DRIVE WASHER MS90353S & U / MS90354S & U MS21140S & U / MS21141S & U MAXIBOLT®, BACB30YY, YU, & YT	Alternate Tools: GB722 & GB2480(A)
Ref. No.	Qty.	Description	SB05-752C-20
1	1	Anvil-Driving	15597
2	1	Anvil & Holder Assy	17743
3	1	Collet	20727
4	1	Super-Grip Jaw Assy	30544-S
5	1	Spacer	70572
6	1	Extension-Collet	70550