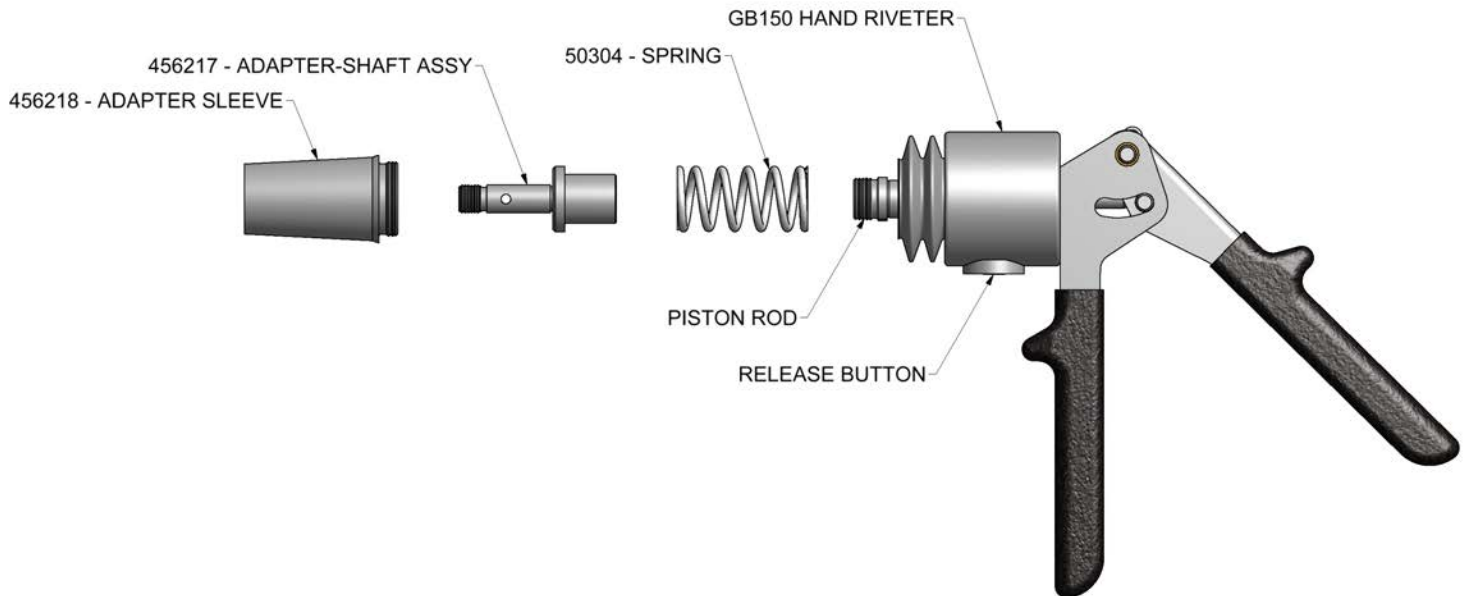


GB456A PARTS LIST

⚠ WARNING: Do not squeeze handle together without Adapter-Shaft Assembly (456217) and the Spring (50304) being installed on tool.



456219-ADAPTER ASSEMBLY

1. Insert adapter shaft assembly (456217) into end of spring (50304).
2. Insert other end of spring (50304) over piston rod and thread hand tight until it stops.
3. Place adapter sleeve (456218) over assembly and thread hand tight into tool.

*Refer to pulling head data sheets for installation and adjustments.

HOW TO USE THE GB456A

1. Attached correct nose assembly to tool.
2. Install fastener into work.
3. Install fastener into nose assembly.
4. Squeeze handles together repeatedly until fastener breaks
5. Reset tool by pressing and holding the release button in while squeezing handles together until tool is fully retracted.
6. Remove pintail.
7. Repeat steps 1-6.

*Refer to pulling head data sheets for installation and adjustments.