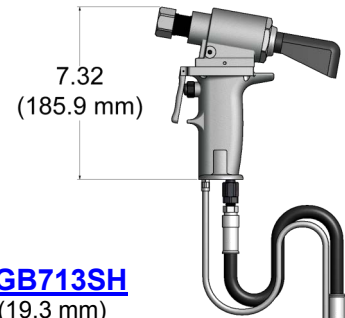
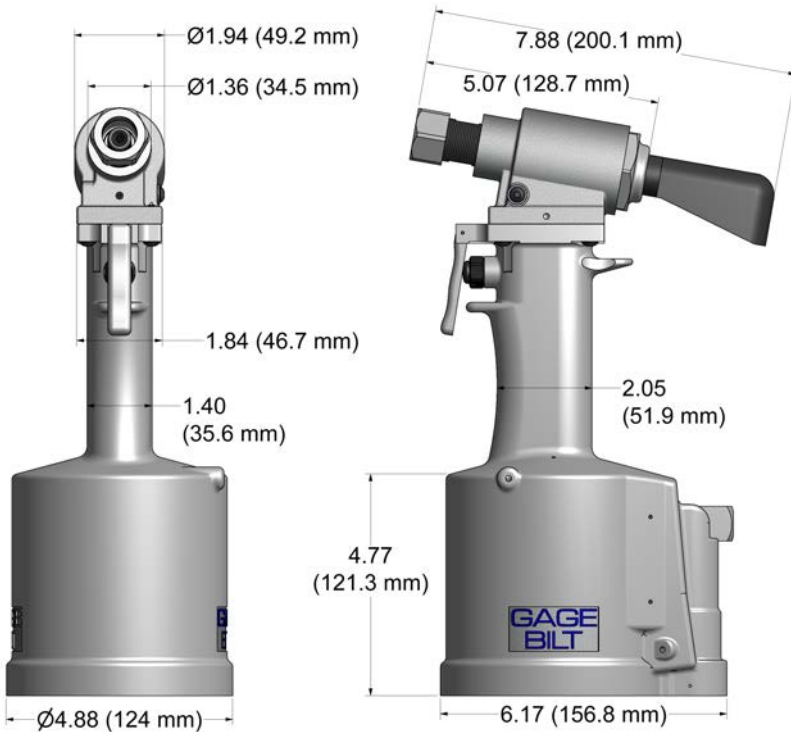


# GB713

## INSTALLATION TOOL SERIES

### GB713

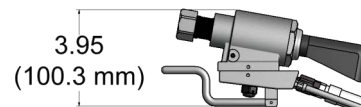
Stroke - 0.760" (19.3mm)  
 Tool weight - 6.50 lbs. (2.9 kg)  
 Pull load - 4,500 (20.0 kN)



### GB713SH

Stroke - 0.760" (19.3 mm)  
 Hand held weight - 2.50 lbs. (1.1 kg)  
 Entire tool weight - 7.50 lbs. (3.4 kg)  
 Pull load - 4,500 (20.0 kN)  
 Standard Hyd. Hose Length - 8ft (2.4m)

*5ft Hyd. Hoses are recommended with use of Backpack  
 Additional custom lengths are available.*



### GB713SR

Stroke - 0.760" (19.3 mm)  
 Hand held weight - 2.00 lbs. (0.9 kg)  
 Entire tool weight - 7.00 lbs. (3.2 kg)  
 Pull load - 4,500 (20.0 kN)  
 Standard Hyd. Hose Length - 3ft (1.m)

*5ft Hyd. Hoses are recommended with use of Backpack  
 Additional custom lengths are available.*

## DESCRIPTION

The GB713 series are pneumatic-hydraulic tools designed specifically for the efficient installation of blind rivets and lockbolt fasteners. It weighs 6.50 lbs. (2.9 kg) and can be operated in any position. It has a 0.760" (19.3 mm) setting stroke and a rated pull load of 4,500 pounds (20.0 kN) with 90 psi. (6.2 bar) air pressure at the air inlet.

The GB713SH and GB713SR riveters offer a unique "split" system providing the operator with an ergonomic tool with reduced hand held weight. The GB713SH comes with 8 feet (2.4 m) of hose and the GB713SR comes with 3 feet (1 m) of hose. Use with our "NEW" Split-System Backpacks to increase user mobility, ergonomics and productivity. Contact GAGE BILT for more information.

The GB713 series riveter operate on 90 to 100 psi. (6.2-6.9 bar) of air pressure, with 90 psi. (6.2 bar) providing the maximum efficiency. At 90 psi. (6.2 bar) of air pressure, the GB713 series does not exceed 81.5 dB(A) and consumes .30 SCF/cycle (8.50 L/cycle). The air inlet is provided with 1/4-18 female pipe thread to accept the users air hose fitting.

**NOSE ASSEMBLIES ARE NOT FURNISHED WITH TOOL AND MUST BE ORDERED SEPARATELY.**



# GB713-NOSE ASSEMBLY SELECTION CHART & ACCESSORIES

## ACCESSORIES

**Catcher Bag-Stem**  
#704214  
(Sold Separately)



**Air Bleeder Assy**  
#704153  
(Sold Separately)



**Grip Gage #269G3**  
For CHERRYMAX®, "A" Code, NAS 1900 series  
and CHERRYLOCK® rivets  
(Sold Separately)



**Grip Gage #GB105093**

For NAS LOCKBOLTS and  
blind fasteners  
(Sold Separately)



**Gage Bilt also supplies pin & collar swage  
inspection gages to certify swage installation.**  
(Sold Separately)



### Riveter Kits

Gage Bilt offers a wide selection of standard and  
custom kits tailored to your needs  
Contact us for more information.  
(Sold Separately)

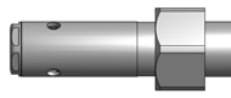


## NOSE ASSEMBLIES

**STRAIGHT**  
(Sold Separately)

**RIGHT ANGLE**  
(Sold Separately)

**OFFSET**  
(Sold Separately)



| FASTENER  | DIA.         | STRAIGHT        |                  | *RIGHT ANGLE         | *OFFSET           |
|---|--------------|-----------------|------------------|----------------------|-------------------|
| C6L® LOCKBOLTS  | 3/16         | LB06-722-20     | LB06-722-60      |                      |                   |
|   | 1/4          | LB08-722-20     | LB08-722-60      |                      |                   |
| MAGNA-GRIP® LOCKBOLTS   | 3/16         | MG06-722-20     | MG06-722-60      |                      |                   |
|   | 1/4          | MG08-722-20     | MG08-722-60      |                      |                   |
| BLIND BOLT (SINGLE ACTION)<br>WITH OR W/OUT DRIVE WASHER<br>MS90353S & U / MS90354S & U<br>MS21140S & U / MS21141S & U<br>MAXI-BOLT®, BACB30YY, YU, &<br>YT | 1/8          | SB04-752C-20    | SB04-752C-45     | SB04-751C-54RA 4     | SB04-752B-43OS    |
|   | 5/32         | SB05-752C-20    | SB05-752C-45     | SB05-751C-54RA 4     | SB05-752A-43OS    |
|   | 3/16         | SB06-752B-20    | SB06-752B-45     | SB06-751B-54RA 4     | SB06-204D-27OS 3  |
|   | 1/4          | SB08-713-20 3   | SB08-713-45 3    | SB08-713A-58RA 3     | SB08-204D-27OS 3  |
|   | 1/4          | SB08-713-20 3   | SB08-713-45 3    | SB08-713A-58RA 3     | SB08-204D-27OS 3  |
| BLIND BOLT (SINGLE ACTION)<br>WITH DRIVE WASHER<br>MS90353S & U / MS90354S & U<br>MS21140S & U / MS21141S & U<br>CR7000 SERIES,<br>BACB30YY, YU, & YT       | 1/8          | UBB04-752C-20   | UBB04-752C-45    | UBB04-751C-54RA 4    | UBB04-752B-43OS   |
|   | 5/32         | UBB05-752C-20   | UBB05-752C-45    | UBB05-751C-54RA 4    | UBB05-752B-43OS   |
|   | 3/16         | UBB06-752B-20   | UBB06-752B-45    | UBB06-751B-54RA 4    | UBB06-204D-27OS   |
|   | 1/4          | UBB08-713-20 3  | UBB08-713-45 3   | UBB08-713A-58RA 3    | UBB08-204D-27OS 3 |
| EN6122 & UAB130-EU<br>EN6127 & UAB6127-EU<br>EN6128 & UAB100-EU<br>EN6129 & UABP-EU   | 5/32         | UAB568-713-21 5 | UAB568-713-61 5  |                      |                   |
|   | 3/16         |                 |                  | UAB06-751B-54RA 4    | UAB06-752B-43OS   |
| BLIND RIVET (SINGLE ACTION)<br>WITH OR W/OUT DRIVE WASHER<br>NAS1900 S & U SERIES   | 1/8          | SMLS04-752C-20  | SMLS04-752C-45   | SMLS04-751C-54RA 4   | SMLS04-752B-43OS  |
|   | 5/32         | SMLS05-752C-20  | SMLS05-752C-45   | SMLS05-751C-54RA 4   | SMLS05-752B-43OS  |
|   | 3/16         | SMLS06-752B-20  | SMLS06-752B-45   | SMLS06-751C-54RA 4   | SMLS06-752B-43OS  |
|   | 1/4          | SMLS08-713-20   | SMLS08-713B-58RA | SMLS08-713B-58RA     | SMLS08-752B-43OS  |
| "A" CODE<br>NAS1398A & NAS1399A   | 3/32         | 3A-352B-25      |                  | 3A-751C-54RA 4       |                   |
|   | 1/8          | 4A-752C-20      | 4A-752C-45       | 4A-751C-54RA 4       | 4A-752B-43OS      |
|   | 5/32         | 5A-752C-20      | 5A-752C-45       | 5A-751C-54RA 4       | 5A-752B-43OS      |
|   | 3/16         | 6A-752B-20      | 6A-752B-45       | 6A-751C-54RA 4       | 6A-752B-43OS      |
| T RIVET®  | 3/16         | 6T-352-21       | 6T-352-61        |                      |                   |
|   | 1/4          | 8T-352-21       | 8T-352-61        |                      |                   |
| PROTRUDING HEAD,<br>MULTI-GRIP BLIND RIVETS   | 3/16         | MGL06-752A-21   | MGL06-752A-61    | MGL06-713B-58RA      |                   |
|   | 1/4          | MGL08-752A-21   | MGL08-752A-61    | MGL08-713B-58RA      |                   |
| MONOBOLT®   | 3/16         | MB06-752A-21    | MB06-752A-61     |                      |                   |
| 1/4   | MB08-752A-21 | MB08-752A-61    |                  |                      |                   |
| CONTAINER BOLT (R 12)<br>HLPP, HLPMA, HLPPE, HLPFS<br>HLPSC & HLPISM  | 3/8          | HT12-713-20     |                  |                      |                   |
| TLR RIVET®  | 1/4          | 8TLR-352-21     | 8TLR-352-61      |                      |                   |
| CHERRYMAX®,<br>CHERRYMAX® AB,<br>BACR15FR/FP, BACR15GF/GK   | 1/8          | 456MAX-751-23 1 | 456MAX-751A-61 1 | 456MAX-751D-54RA 1,4 | 456MAX-731-43OS 1 |
|   | 5/32         |                 |                  |                      |                   |
|   | 3/16         |                 |                  |                      |                   |
|   | 1/4          | 08MAX-752B-20   | 08MAX-752B-45    | 08MAX-713A-58RA      | 08MAX-204D-27OS   |
| ASP®<br>ASP 2, ASP PF, ASP 4 FF,<br>ASP 2 F, ASP 2 LC   | 13/64        | ASP06-752B-20   | ASP06-752B-45    | ASP06-751B-54RA 4    | ASP06-752B-43OS   |
|   | 17/64        | ASP08-752B-20   | ASP08-752B-45    | ASP08-752B-43OS      | ASP08-752B-43OS   |
|   | 21/64        | ASPI0-713-20    | ASPI0-713-45     | ASPI0-204D-27OS      | ASPI0-204D-37OS   |
| STANDARD MBC®<br>NAS1719, NAS1720<br>NAS1721  | 1/8          | MBC04-752C-20   | MBC04-752C-45    | MBC04-751C-54RA 4    | MBC04-752C-43OS   |
|   | 5/32         | MBC05-752C-20   | MBC05-752C-45    | MBC05-751C-54RA 4    | MBC05-752C-43OS   |
|   | 3/16         | MBC06-752B-20   | MBC06-752B-45    | MBC06-751C-54RA 4    | MBC06-752C-43OS   |
| MBO® LOCK CREATOR<br>NAS1719X(L), NAS1720X(L)<br>NAS1721X(L)  | 1/8          |                 |                  |                      |                   |
|   | 5/32         | 456MAX-751-23 1 | 456MAX-751A-61 1 | 456MAX-751D-54RA 1,4 | 456MAX-731-43OS 1 |
|   | 3/16         |                 |                  |                      |                   |
| GROUND STUD,<br>M83454 BACS93B  | 8/32         | GS8-752C-20     | GS8-752C-45      | GS8-751C-54RA 4      | GS8-752B-43OS     |
|   | 10/32        | GS10-752B-20    | GS10-752B-45     | GS10-752A-54RA 4     | GS10-752B-43OS    |
| MILLIMETER PLUG SEAL  | 4mm          | 5N-751-23       | 5N-352-61        | 45N-751B-54RA 4      | 5N-751A-43OS      |
|   | 5mm          | 6N-751-23       | 6N-352-61        | 6N-751C-54RA 4       | 6N-751A-43OS      |
| POP® OPEN END<br>NAIL RIVET   | 5/32         | 5N-751-23       | 5N-352-61        | 45N-751B-54RA 4      | 5N-751A-43OS      |
|   | 3/16         | 6N-751-23       | 6N-352-61        | 6N-751C-54RA 4       | 6N-751A-43OS      |
| POP® CLOSED END<br>NAIL RIVET<br>(ALUMINUM MANDREL)   | 5/32         | 5CEA-751-23     | 5CEA-352-61      | 5CEA-751B-54RA 4     | 5CEA-751-43OS     |
|   | 3/16         | 6CEA-751-23     | 6CEA-352-61      | 6CEA-751C-54RA 4     | 6CEA-751-43OS     |
| POP® CLOSED END<br>NAIL RIVET<br>(STEEL MANDREL)  | 5/32         | 5CES-751-23     | 5CES-352-61      | 5CES-751B-54RA 4     | 5CES-751-43OS     |
|   | 3/16         | 6CES-751-23     | 6CES-352-61      | 6CES-751C-54RA 4     | 6CES-751-43OS     |
| 1/4   |              |                 | 8CES-713A-58RA   |                      |                   |

T RIVET®, CHERRYMAX®, MAXI-BOLT®, AND MBC® ARE REGISTERED TRADEMARKS OF CHERRY AEROSPACE. MONOBOLT® AND TLR® ARE REGISTERED TRADEMARKS OF AVDEL UK LIMITED. ASP®, MAGNA-GRIP® AND C6L® ARE REGISTERED TRADEMARKS OF ARCONIC INC.

GAGE BILT CERTIFIES THE GB713 WILL INSTALL THE ABOVE FASTENERS

- \*ALL OFFSET 204 SERIES NOSES REQUIRE 751204 ADAPTER & 713152 STROKE LIMITER.
- 1) INSTALLS 1/8", 5/32" AND 3/16" DIAMETERS.
  - 2) ALUMINUM ONLY.
  - 3) 105 P.S.I. REQUIRED FOR MS90353 & MS90354.
  - 4) THESE NOSES REQUIRE 713153 STROKE LIMITER.
  - 5) INSTALLS 5/32", 3/16", AND 1/4"

NOTE: THE LAST 2 DIGITS OF THE NOSE ASSEMBLY REPRESENTS THE LENGTH THE NOSE EXTENDS FROM THE TOOL IE. -20 = 2.0 INCHES Rev. 5/18