

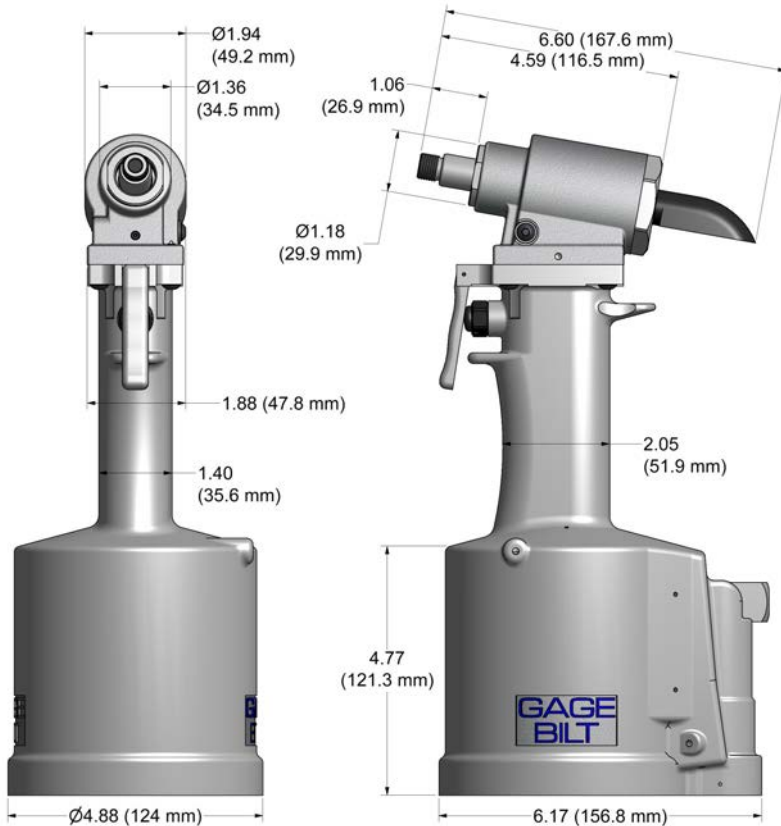
GB744

INSTALLATION TOOL SERIES

GB744

Stroke - 0.580" (14.73mm)
 Hand held weight - 7.0 lbs (3.2 kg)
 Entire tool weight - 7.0 lbs (3.2 kg)
 Pull load - 3,800 lbs. (16.9 kN)

NSN# 5130-01-151-1856



DESCRIPTION

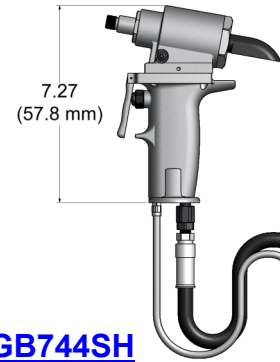
The GB744 is a pneumatic-hydraulic installation tool designed specifically for the efficient installation of 1/4" CHERRYMAX® & AllMax® fasteners, as well as blind rivets. It weighs just over 7 lbs. (3.2 kg) and can be operated in any position. It has a 0.580" (14.73 mm) fastener setting stroke and a rated pull load of 3,800 lbs. (16.9 kN) on 90 psi (6.2 bar) air pressure at the air inlet.

The GB744SH and GB744SR installation tools offer a unique "split" system providing the operator with an ergonomic tool with reduced hand held weight. The GB744SH comes with 8 feet (2.4 m) of hose and the GB744SR comes with 3 feet (1.5 m) of hose.

The GB744 installation tool operates on 90 to 100 psi (6.2-6.9 bar) of air pressure, with 90 psi. (6.2 bar) providing the maximum efficiency. At 90 psi. (6.2 bar) air pressure, the GB744 does not exceed 81.5 dB(A) and consumes 0.30 SCF/cycle (8.50 L/cycle).

The air inlet is provided with 1/4-18 female pipe thread for accepting the user's air hose fitting.

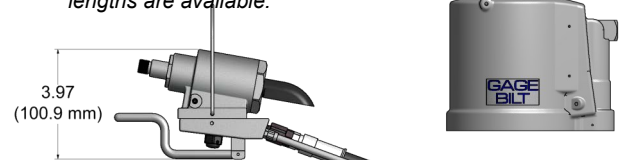
NOSE ASSEMBLIES ARE NOT FURNISHED WITH THIS RIVETER AND MUST BE ORDERED SEPARATELY.



GB744SH

Stroke - 0.580" (14.73mm)
 Hand held weight - 2.5 lbs (1.1 kg)
 Entire tool weight - 8.0 lbs (3.6 kg)
 Pull load - 3,800 lbs. (16.9 kN)

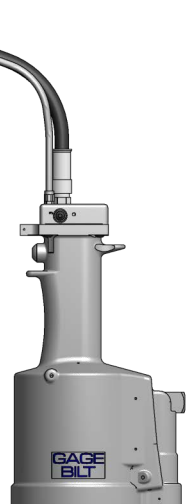
5 ft Hyd. Hoses are recommended with use of Backpack. Additional custom lengths are available.



GB744SR

Stroke - 0.580" (14.73mm)
 Hand held weight - 2.0 lbs (.9 kg)
 Entire tool weight - 7.5 lbs (3.4 kg)
 Pull load - 3,800 lbs. (16.9 kN)

5 ft Hyd. Hoses are recommended with use of Backpack. Additional custom lengths are available.



GAGE BILT
 **MADE in USA**



INNOVATIVETOOLING

On the leading edge of Aircraft Tooling

800-832-7009

sales@innovativetooling.com

innovativetooling.com



ACCESSORIES

Catcher Bag-Stem
#704214
 (Equivalent to #670A20)
 (Sold Separately)



Air Bleeder Assy
#704153
 (Equivalent to #700A77)
 (Sold Separately)



Grip Gage #269G3
 (Similar to #269C3)
 For CHERRYMAX®
 and CHERRYLOCK® rivets
 (Sold Separately)



Riveter Kits

Gage Bilt offers a wide selection of standard and custom kits tailored to your needs. Contact us for more information. (Sold Separately)



NOSE ASSEMBLY SELECTION CHART

STRAIGHT (Sold Separately) **RIGHT ANGLE** (Sold Separately) **OFFSET** (Sold Separately)



FASTENER	DIAMETER	STRAIGHT	RIGHT ANGLE (3)	OFFSET
CHERRYMAX® ALLMAX® HUCKMAX® HUCK-CLINCH® MIL-R-7885 NAS9301-9312 BACR15FRFR BACR15GJ/GK	1/8 5/32 3/16	456MAX-701-17 ^{1,2} 456MAX-744-20 ¹ 456MAX-749-35 ^{1,2,3}	456MAX-704-54RA ^{1,2}	456MAX-704-43OS ^{1,2} 456MAX-744-50OS ¹
BLIND BOLT (SINGLE ACTION) WITH OR W/O DRIVE WASHER MS90353S & U / MS90354S & U MS21140S & U / MS21141S & U MAXI-BOLT®, BACB30YY, YU, & YT	5/32 3/16	08MAX-744-20	SB05-704A-54RA ^{2,6} SB05-744-58RA ⁷ SB06-704-54RA ^{2,5,6} SB06-744-58RA ⁷	08MAX-744A-50OS
BLIND BOLT (SINGLE ACTION) WITH DRIVE WASHER MS90353S & U / MS90354S & U MS21140S & U / MS21141S & U MAXI-BOLT®, BACB30YY, YU, & YT	5/32 3/16		UBB05-704A-54RA ^{2,6} UBB05-744-58RA ⁷ UBB06-704-54RA ^{2,5,6} UBB06-744-58RA ⁷	

CHERRYMAX® IS A REGISTERED TRADEMARK OF CHERRY AEROSPACE. HUCKMAX® AND HUCK-CLINCH® ARE REGISTERED TRADEMARKS OF ARCONIC INC. ALLMAX® IS A REGISTERED TRADEMARK OF ALLFAST FASTENING SYSTEMS, INC.

GAGE BILT CERTIFIES THE GB744 WILL INSTALL THE ABOVE FASTENERS

- 1) INSTALLS 1/8", 5/32" AND 3/16" DIAMETERS
- 2) NOSE ASSEMBLIES REQUIRE THE 744704 ADAPTER.
- 3) FRONT END EJECTING NOSE ASSEMBLY.
- 4) RIGHT ANGLE NOSE ASSEMBLY MAY REQUIRE MORE THAN 1 PULL.
- 5) FOR MAINTENANCE ONLY
- 6) NOSE ASSEMBLIES REQUIRE THE 744156 STROKE LIMITER
- 7) HEAVY DUTY

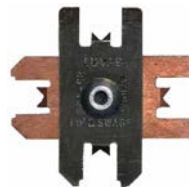
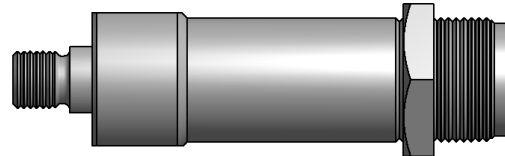
Adapter Assy

#744704

(Equivalent to #744A20)

Adapts GB704 series nose assemblies to a GB744 tool.

(See chart).
 (Sold Separately)



Gage Bilt also supplies pin & collar swage inspection gages to certify swage installation. (Sold Separately)

