

# GB756SH SPLIT-HANDLE INSTALLATION TOOL

The GB756SH hand held weight is 4.3 lb (1.95 kg) and is the lightest tool on the market for installing up to 3/8" lockbolt fasteners.

The GB756SH hand held weight is over **250% lighter** than the 256 and over **200% lighter** than the 255 tool.



VS

- ▶ Gage Bilt GB756 hand held weight: 11.1 lb (5.03 kg).
- ▶ Competitor's 256 hand held weight: 11.1 lb (5.03 kg).
- ▶ Competitor's 255 hand held weight: 8.8 lb (4.02 kg).

GB756SH hand held weight: **4.3 lb** (1.95 kg).



GB756 shown



# GAGE BILT

INNOVATIVE  
RIVET & LOCKBOLT TOOLS

**INNOVATIVETOOLING**  
On the leading edge of Aircraft Tooling

800-832-7009

sales@innovativetooling.com

innovativetooling.com

## COMMERCIAL



3/8" C6L®, Avdelok®



3/8" Magna-Grip®, Maxok®



5/16" BOM®, Avbolt®

## AEROSPACE



3/8" LGP®, 10mm MGP®, MLGP®



3/8" NAS, GP®

## GB756SH

Stroke:	0.960" (24.38 mm)
Hand held weight:	4.3 lb (1.95 kg)
Entire tool weight:	15.1 lb (6.85 kg)
Pull load:	10,000 lbf (44.48 kN)
Hyd. Hose Length (std.):	8 ft (2.4 m)

5 ft Hyd. Hoses are recommended with use of Backpack. Additional custom lengths are available

The GB756SH is a pneumatic split-handle installation tool designed specifically for the efficient installation of blind, lockbolt and MagnaGrip® fasteners thru 3/8" diameter. It offers a unique "split" system providing the operator with an ergonomic tool with a reduced hand held weight of only 4.3 lb (1.95 kg) and can be operated in any position.

The GB756SH has a 0.960" (24.38 mm) setting stroke, a rated pull load of 10,000 lbf (44.48 kN) with 90 psi. (6.2 bar) air pressure at the air inlet, and comes with 8 ft (2.4 m) of hydraulic hose. Use with Split-System Backpacks to increase user mobility, ergonomics and productivity.

The GB756SH installation tool operates on 90 to 100 psi. (6.2-6.9 bar) of air pressure, with 90 psi. (6.2 bar) providing the maximum efficiency. At 90 psi. (6.2 bar) of air pressure, the GB756SH does not exceed 74.2 dB(A) and consumes 0.60 SCF/cycle (17 L/cycle). The air inlet is provided with 1/4"-18 female pipe thread to accept the users air hose fitting.

NOSE ASSEMBLIES ARE NOT FURNISHED WITH THIS TOOL AND MUST BE PURCHASED SEPARATELY





**ACCESSORIES**

**NOSE ASSEMBLIES**

**Air Bleeder Assy**

#704153



**Adapter Assy #353204**

Adapts 204 series noses to GB756 tool  
Use 756152 Stroke Limiter with 204 series noses  
(Sold Separately)



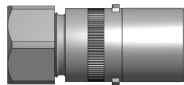
**Adapter Assy #745205**

Adapts 205 series noses to GB756 tool  
Use 756153 Stroke Limiter with 205 series noses  
(Sold Separately)



**Adapter Assy #745751**

Adapts -54 & -58 RA series noses to GB756 tool  
Use 756155 stroke limiter with -54RA noses  
Use 756152 stroke limiter with -58RA noses  
(Sold Separately)



**Stroke Limiter #756152**

Required with all offset 204 & -58RA series nose assy's when used on GB756 tool.  
Use 353204 adapter with 204 noses  
Use 745751 adapter with -58RA noses  
(Sold Separately)



**Stroke Limiter #756153**

Required with all offset 205 series nose assy's when used on GB756 tool.  
Use 745205 adapter with 205 noses  
(Sold Separately)



**Stroke Limiter #756155**

Required with all -54RA series nose assy's when used on GB756 tool.  
Use 745751 adapter with -54RA noses  
(Sold Separately)



**RIVETER KITS**

Gage Bilt offers a wide selection of standard and custom kits tailored to your needs. Contact us for more information.



**STRAIGHT**

**RIGHT ANGLE**

**OFFSET**



FASTENER	DIA.	STRAIGHT	**RIGHT ANGLE	*OFFSET	
ASP® 2 ASP & ASP PF ASP FF & ASP F ASPLC and MAF	13/64 17/64 21/64	ASP06-745C-23 ASP08-745B-23 ASP10-755-23	ASP06-745C-48 ASP08-745B-48 ASP10-755-48	***ASP06-751B-54RA ASP06-204D-27OS ASP08-204D-27OS ASP10-204D-27OS	ASP06-204D-37OS ASP08-204D-37OS ASP10-204D-37OS
BOMB® AVBOLT®	1/4 5/16	BOM06-755A-23 BOM10-756-26			
COMMERCIAL LOCKBOLTS C6L® AVDELOK®	3/16 1/4 5/16 3/8	NAS06-2581-12 NAS06-2581-23 NAS08-2581-12 NAS08-2581-23 LB10-745C-26 LB12-756-26	NAS06-2581-48 NAS08-2581-48 NAS10-2581-48 NAS12-756-48	NAS06-204C-25OS NAS06-204C-34OS NAS08-204C-25OS NAS08-204C-30OS NAS08-205A-31 NAS10-205D-31 NAS12-205A-31	NAS06-204D-30OS NAS08-204D-30OS NAS08-204C-30OS
CONTAINER BOLT FLOOR BOLT	3/8 5/16	HT12-756-23 FT10-353A-28			
LGP® LOCKBOLT	5/32 3/16	LGP05-2581-12 LGP05-2581-48 LGP06-2581-12 LGP06-2581-48	LGP05-2581-23 LGP06-2581-23	LGP05-204C-25OS LGP05-204C-34OS LGP06-204C-25OS LGP06-204C-34OS	LGP05-204C-30OS LGP06-204D-30OS
LGFL2SC-V LGFL18SC-V LGFL4SC-V LGFL2SP-V LGFL4SP-V LGFL8SC-V LGFL9SC-V LGFL9SP-V BACB30VM BACB30XT ABS0548 BACB30VN BACB30WD BACB30WB BACB30VY BACB31N BACB31P	7/32 1/4 5/16 3/8	LGP07-2581-12 LGP07-755-48 LGP08-2581-12 LGP08-2581-48 LGP10-2581-12 LGP10-2581-48 LGP12-745B-12 LGP12-756-48	LGP07-755-23	LGP07-204C-25OS LGP07-204C-34OS LGP08-204C-25OS LGP08-204C-30OS LGP10-205D-31	LGP07-204C-30OS
MLGP® (MILLIMETER) LOCKBOLT	4mm 5mm 6mm 8mm 10mm	MLGP4-2581-12 MLGP4-2581-23 MLGP5-2581-12 MLGP5-2581-23 MLGP6-2581-12 MLGP6-2581-23 MLGP8-2581-12 MLGP8-2581-23	MLGP4-2581-48 MLGP5-2581-48 MLGP6-2581-48	MLGP4-204C-25OS MLGP4-204C-34OS MLGP5-204C-25OS MLGP5-204C-34OS MLGP6-204C-25OS MLGP6-204C-34OS MLGP8-204C-25OS MLGP8-204C-34OS	MLGP4-204C-30OS MLGP5-204D-30OS MLGP6-204D-30OS MLGP8-204C-30OS MLGP8-205A-31
NAS and GP® SHEAR/TENSION LOCKBOLTS	5/32 3/16 1/4 5/16 3/8	NASS05-2581-12 NASS05-2581-23 NASS05-2581-48 NAS06-2581-12 NAS06-2581-48 NAS08-2581-12 NAS08-2581-48 NAS10-2581-12 NAS10-2581-48 NAS12-745B-12 NAS12-756-48	NAST05-2581-12 NAST05-2581-23 NAST05-2581-48 NAS06-2581-23	NASS05-204C-25O NASS05-204C-30O NASS05-204C-34O NASS05-204C-34O NAS06-204C-25OS NAS06-204C-34OS NAS08-204C-25OS NAS08-204C-34OS NAS10-205D-31	NAST05-204C-20O NAST05-204C-30O NAST05-204C-34O NAS06-204D-30OS NAS06-204D-30OS NAS08-204D-30OS NAS08-205B-31
MGP® (MILLIMETER) LOCKBOLT	4mm 5mm 6mm 8mm 10mm	MGP4-2581-23 MGP5-2581-23 MGP6-2581-23 MGP8-2581-23 MGP10-2581-23	MGP4-2581-48 MGP5-2581-48 MGP6-2581-48	MGP4-204C-25OS MGP4-204C-34OS MGP5-204C-25OS MGP5-204C-34OS MGP6-204C-25OS MGP6-204C-34OS	MGP4-204C-30OS MGP5-204D-30OS MGP6-204D-30OS
MULTI-GRIP LOCKBOLT MAGNA-GRIP® and MAXLOK®	3/16 1/4 5/16 3/8	MG06-745-24 MG08-745-24 MG10-756-28 MG12-756-28	MG06-745-48 MG08-745-48		
MULTI-GRIP STRUCTURAL BLIND RIVET	1/4 5/16 3/8	**MGL08-752A-21 MGL10-353-28 MGL12-353C-28			
OVERSIZE STRUCTURAL RIVET	1/4 5/16 3/8	OS08-353A-48 OS10-756-26 OS12-756A-26	OS10-756-48 OS12-756A-48		
BLIND BOLT (SINGLE ACTION) WITH OR W/O DRIVE WASHER	5/32 3/16 1/4	SB05-745C-23 SB06-745B-23 SB08-755-23	SB05-745C-48 SB06-745B-48 SB08-755-48	***SB05-751C-54RA ***SB06-751B-54RA ***SB08-713A-58RA	SB05-204D-27OS SB06-204D-27OS SB08-204D-27OS SB08-205A-35 SB10-205A-35 SB12-205A-35
BLIND BOLT (SINGLE ACTION) WITH DRIVE WASHER	5/32 3/16 1/4	UBB05-745C-23 UBB06-745B-23 UBB08-755-23	UBB05-745C-48 UBB06-745B-48 UBB08-755-48	***UBB05-751C-54RA ***UBB06-751B-54RA ***UBB08-713A-58RA	UBB05-204D-27OS UBB06-204D-27OS UBB08-204D-27OS UBB08-205B-35 UBB10-205B-35 UBB12-205A-35

ASP®, BOMB®, LGP®, C6L®, GP®, MLGP®, MGP®, and MAGNA-GRIP® ARE REGISTERED TRADEMARKS OF ARCONIC INC. AVBOLT®, AVDELOK®, and MAXLOK® ARE REGISTERED TRADEMARKS OF AVDEL UK LIMITED. MAX-LOK® IS A REGISTERED TRADEMARK OF CHERRY AEROSPACE FASTENERS.

**GAGE BILT CERTIFIES THE GB756 WILL INSTALL THE ABOVE FASTENERS**  
See [www.gagebilt.com/nose\\_assemblies.php](http://www.gagebilt.com/nose_assemblies.php) for nose assembly information (data sheets)

\*\*\*ALL OFFSET 204 SERIES NOSES REQUIRE 353204 ADAPTER WITH 756152 STROKE LIMITER.  
\*\*\*ALL OFFSET 205 SERIES NOSES REQUIRE 745205 ADAPTER WITH 756153 STROKE LIMITER.  
\*\*\*NOSE REQUIRES 745751 ADAPTER  
\*\*\*-54RA RIGHT ANGLE SERIES NOSES REQUIRE 745751 ADAPTER WITH 756155 STROKE LIMITER.  
\*\*\*-58RA RIGHT ANGLE SERIES NOSES REQUIRE 745751 ADAPTER WITH 756152 STROKE LIMITER.

NOTE: THE LAST 2 DIGITS OF THE NOSE ASSEMBLY REPRESENTS THE LENGTH THE NOSE EXTENDS FROM THE TOOL. I.E. -20 = 2.0 INCHES

Rev. 5/20

**GAGE BILT ALSO SUPPLIES PIN & COLLAR SWAGE INSPECTION GAGES TO CERTIFY CORRECT SWAGE INSTALLATION.**  
(Sold Separately)



**Grip Gage #GB105093**  
For NAS LOCKBOLTS and blind fasteners  
(Sold Separately)

